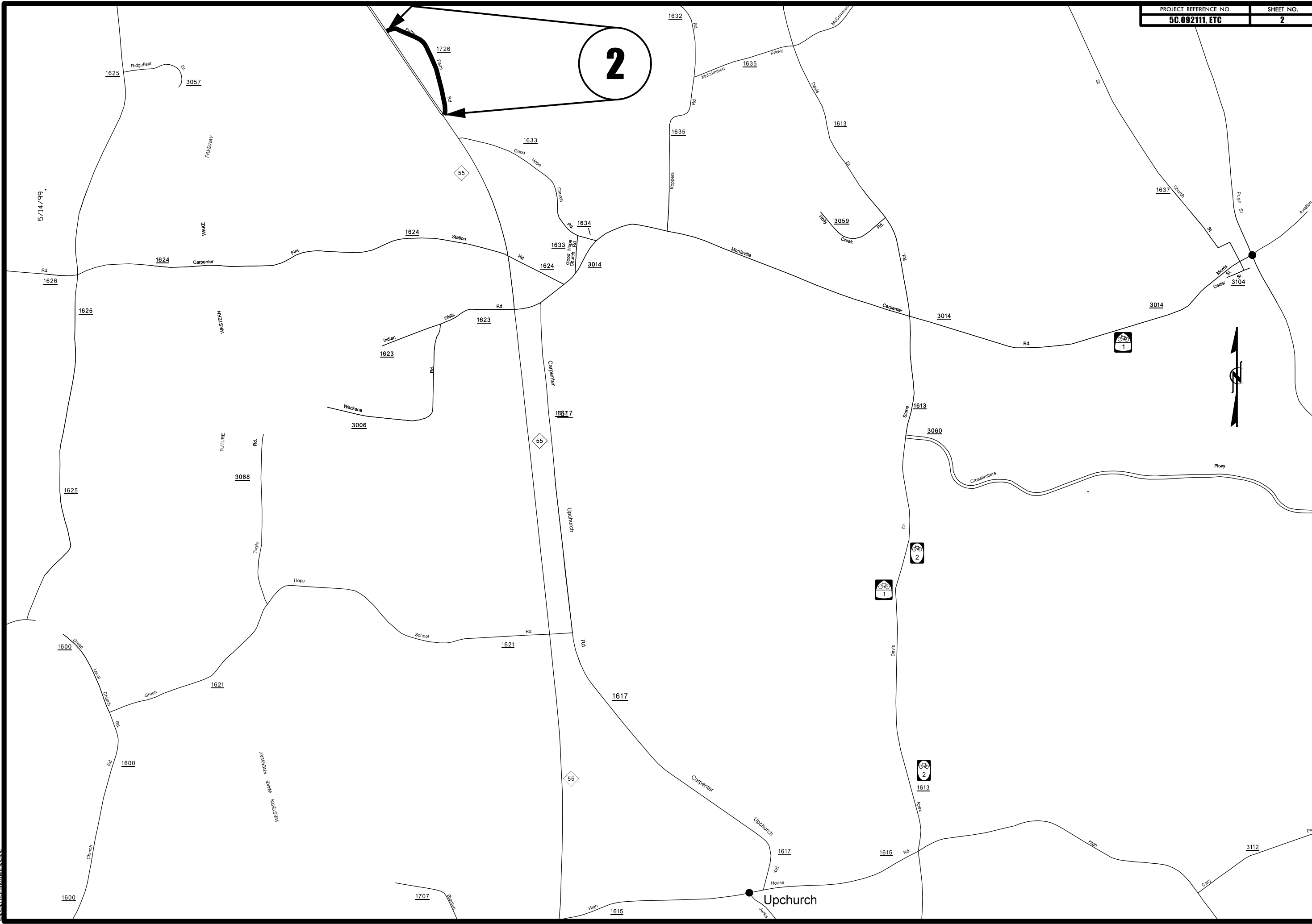


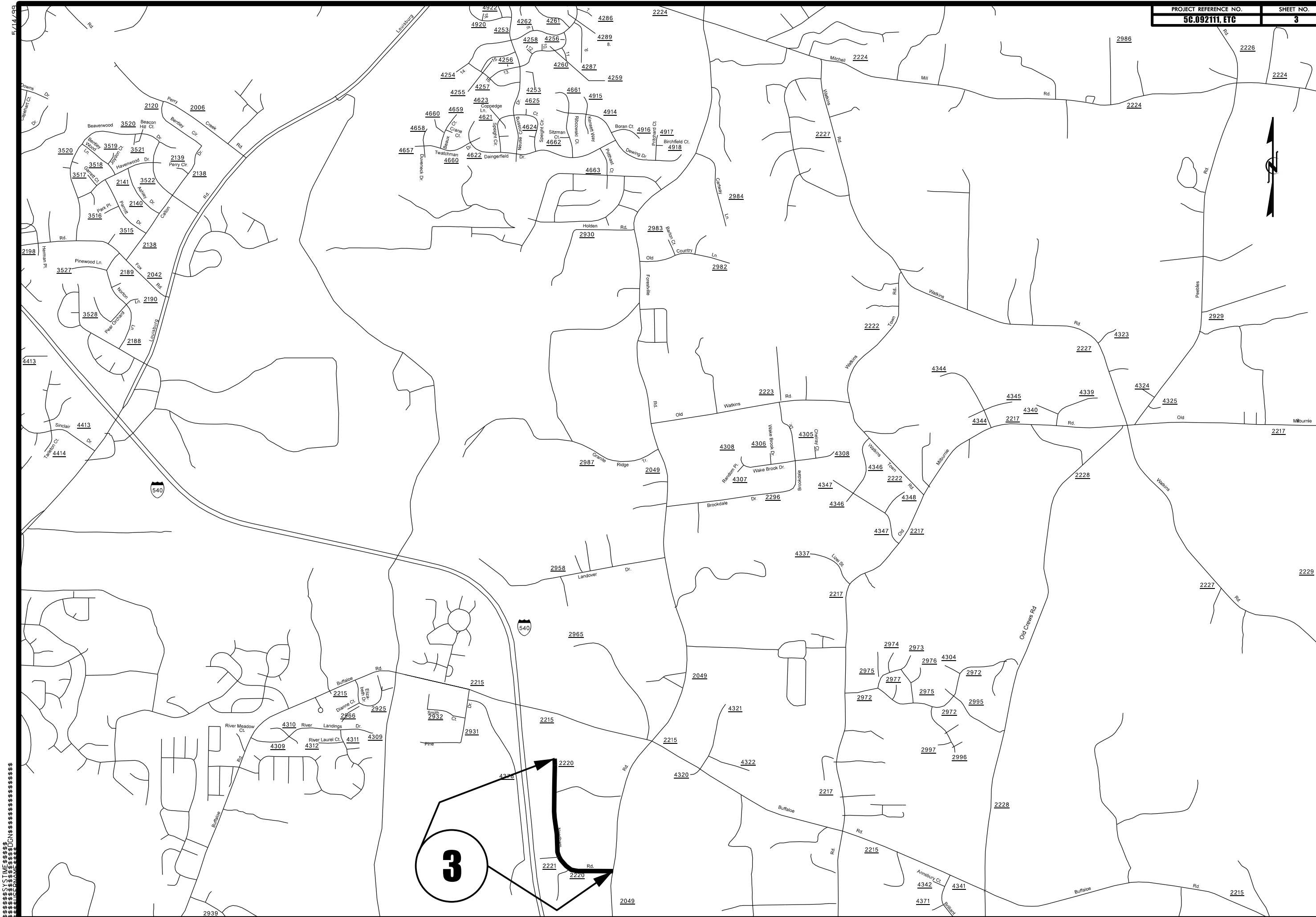
5/14/99
CUSTOMER'S USE ONLY
NO CHANGES TO BE MADE
AFTER THIS DATE
BY ANYONE
OTHER THAN THE
DESIGNER
OR HIS
AUTHORIZED
REPRESENTATIVE
ALL CHANGES
MUST BE
MADE IN
THIS
MANNER
AND
MUST
BE
INITIALED
AND
DATED
BY
THE
DESIGNER
OR
HIS
AUTHORIZED
REPRESENTATIVE
ALL
CHANGES
MUST
BE
MADE
IN
THIS
MANNER
AND
MUST
BE
INITIALED
AND
DATED
BY
THE
DESIGNER
OR
HIS
AUTHORIZED
REPRESENTATIVE

2

5/14/99

CUSTOMER'S USE ONLY





3

5/14/99

PAVEMENT SCHEDULE

(C1)	PROP. APPROX. 1 1/2" ASPH. CONC. SURFACE COURSE, TYPE S9.5B, AT AN AVERAGE RATE OF 168 LBS. PER SQ. YD.
(C2)	PROP. APPROX. 1 1/2" ASPH. CONC. SURFACE COURSE, TYPE SF9.5A, AT AN AVERAGE RATE OF 165 LBS. PER SQ. YD.
(D1)	PROP. APPROX. 2 1/2" ASPH. CONC. INTERMEDIATE COURSE, TYPE 119.0B, AT AN AVERAGE RATE OF 285 LBS. PER SQ. YD.
(U1)	EXISTING ABC TO BE CONDITIONED AND SHAPED
(U2)	EXISTING PAVEMENT

NOTES

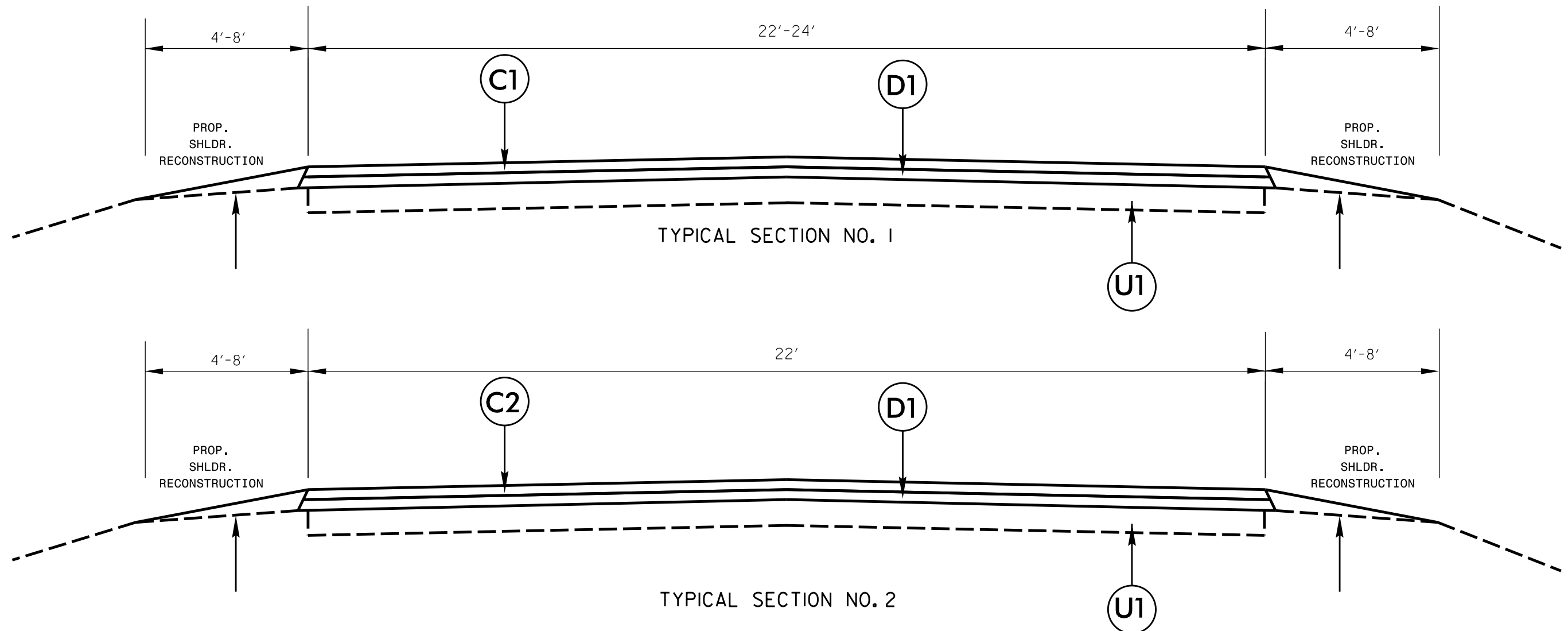
ALL UNPAVED S.R. ROADS TO BE RESURFACED 50' FROM EDGE OF PAVEMENT OF MAIN PROJECT
 ALL PAVED S.R. ROADS TO BE RESURFACED TO THE ENDS OF THE RADII, OR AS DIRECTED BY THE ENGINEER.
 PAVEMENT WIDENING AND INTERSECTIONS INCLUDED IN THE TABLE OF QUANTITIES.

PROJECT REFERENCE NO.

5C.092111, ETC

SHEET NO.

4



PAVEMENT SCHEDULE

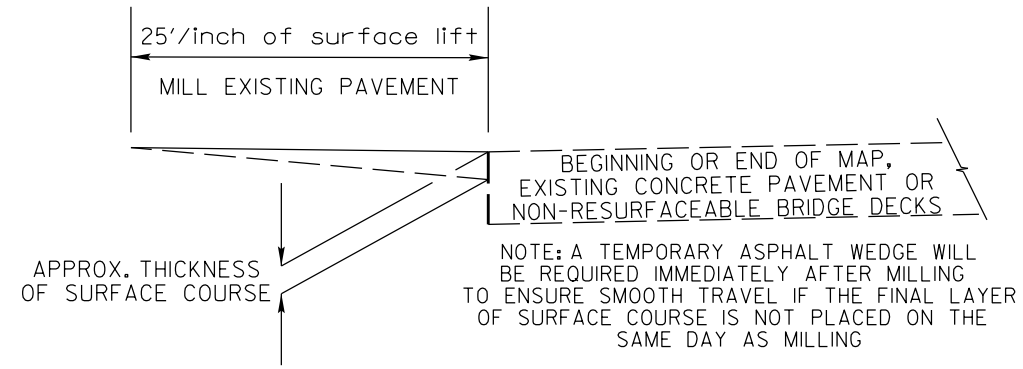
Ⓒ1	PROP. APPROX. 1 1/2" ASPH. CONC. SURFACE COURSE, TYPE S9.5B, AT AN AVERAGE RATE OF 168 LBS. PER SQ. YD.
Ⓒ2	PROP. APPROX. 1 1/2" ASPH. CONC. SURFACE COURSE, TYPE SF9.5A, AT AN AVERAGE RATE OF 165 LBS. PER SQ. YD.
Ⓓ1	PROP. APPROX. 2 1/2" ASPH. CONC. INTERMEDIATE COURSE, TYPE 119.0B, AT AN AVERAGE RATE OF 285 LBS. PER SQ. YD.
⒰1	EXISTING ABC TO BE CONDITIONED AND SHAPED
⒰2	EXISTING PAVEMENT

PROJECT REFERENCE NO.

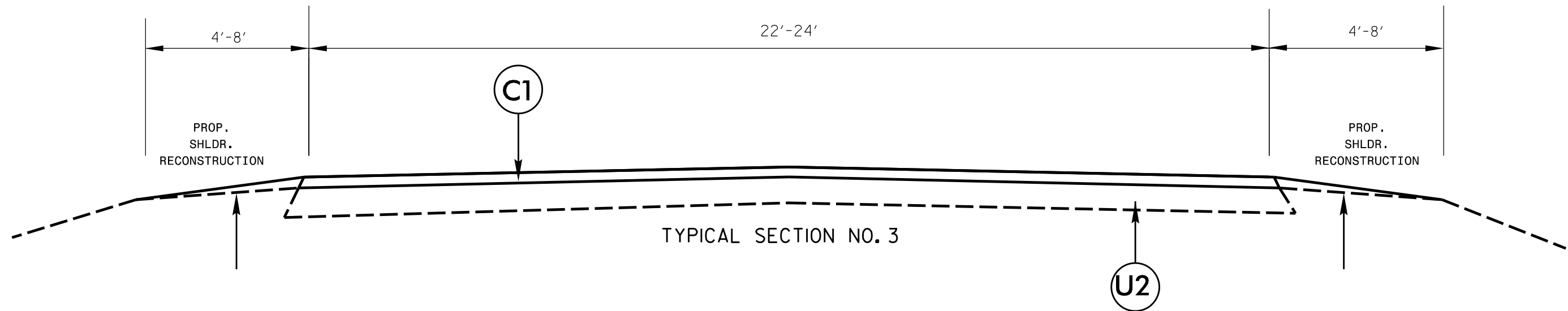
5C.092111, ETC

SHEET NO.

5



DETAIL OF INCIDENTAL MILLING



PROJECT NO.	SHEET NO.	TOTAL NO.
5C.092111, 5C.092119		
5C.092125,		

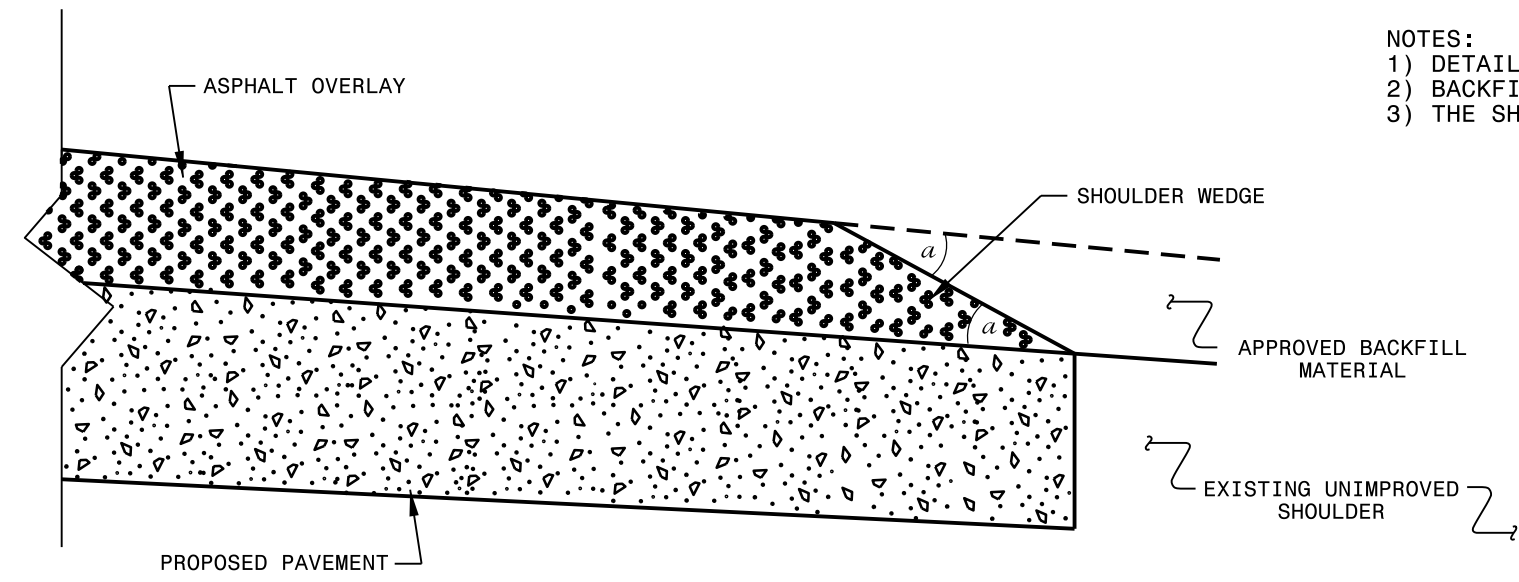
SUMMARY OF QUANTITIES

PROJECT NO	COUNTY	MAP NO	ROUTE	DESCRIPTION	TYP	LANES	LANE TYPE	FINAL SURFACE TESTING REQUIRED	WARM MIX ASPHALT REQUIRED	LENGTH MI	WIDTH FT	BORROW CY	REPAIR EXISTING AGGREGATE BASE COURSE TON	CONDITIONING EXISTING BASE MSY	SHOULDER RECONSTRUCTION SMI	INCIDENTAL MILLING SY	INTERMEDIATE COURSE, I19.0B TONS	SURFACE COURSE, S9.5B TONS	SURFACE COURSE, SF9.5A TON	ASPHALT BINDER FOR PLANT MIX TON	SEED & MULCHING AC
5C.092111	Wake	1	SR 1103 - FLEMING RD	FROM SR 1101 (PINEY GROVE-WILBON RD) TO EOM	2	2		NO	NO	0.57	22	297	15	7	1.14	167	1,090		641	95	1.10
TOTAL FOR MAP NO. 1										0.57		297	15	7	1.14	167	1,090		641	95	1.10
TOTAL FOR PROJ NO. 5C.092111										0.57		297	15	7	1.14	167	1,090		641	95	1.10
5C.092119	Wake	2	SR 1726 - PETTY FARM RD	FROM NC 55 TO END OF MAINTENANCE	1,3	2		NO	NO	0.4	22-24	208	15	5	0.80	167	799	479		67	0.77
TOTAL FOR MAP NO. 2										0.4		208	15	5	0.80	167	799	479		67	0.77
TOTAL FOR PROJ NO. 5C.092119										0.4		208	15	5	0.80	167	799	479		67	0.77
5C.092125	Wake	3	SR 2220 - NEEDHAM RD	FROM SR 2049 (FORESTVILLE ROAD) TO EOM	2	2		NO	NO	0.59	22	307	15	7	1.18	167	1,128		663	99	1.14
TOTAL FOR MAP NO. 3										0.59		307	15	7	1.18	167	1,128		663	99	1.14
TOTAL FOR PROJ NO. 5C.092125										0.59		307	15	7	1.18	167	1,128		663	99	1.14
GRAND TOTAL										1.56		812	45	19	3.12	501	3,017	479	1,304	261	3.01

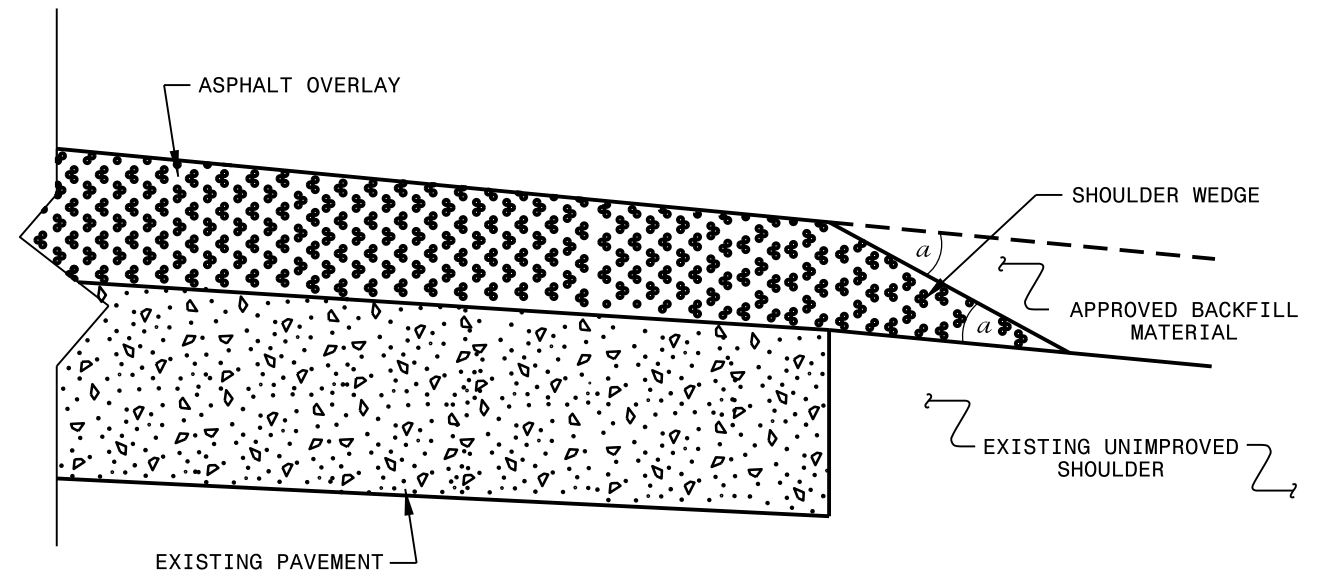
THERMOPLASTIC AND PAINT QUANTITIES

PROJECT NO	COUNTY	MAP NO	ROUTE	DESCRIPTION	TYP	LANES	LANE TYPE	LENGTH	WIDTH	4413000000-E WORK ZONE ADVANCE/ GENERAL WARNING SIGNING SF	4457000000-N TEMPORARY TRAFFIC CONTROL LS	4685000000-E 4" X 90 M WHITE THERMO LF	4686000000-E 4" X 120 M YELLOW THERMO LF
5C.092111	Wake	1	SR 1103 - FLEMING RD	FROM SR 1101 (PINEY GROVE-WILBON RD) TO EOM	2	2		0.57	22	64	0.36	6,133	6,019
TOTAL FOR MAP NO. 1								0.57		64	0.36	6,133	6,019
TOTAL FOR PROJ NO. 5C.092111								0.57		64	0.36	6,133	6,019
5C.092119	Wake	2	SR 1726 - PETTY FARM RD	FROM NC 55 TO END OF MAINTENANCE	1,3	2		0.4	22-24	64	0.26	4,304	4,224
TOTAL FOR MAP NO. 2								0.4		64	0.26	4,304	4,224
TOTAL FOR PROJ NO. 5C.092119								0.4		64	0.26	4,304	4,224
5C.092125	Wake	3	SR 2220 - NEEDHAM RD	FROM SR 2049 (FORESTVILLE ROAD) TO EOM	2	2		0.59	22	64	0.38	6,348	6,230
TOTAL FOR MAP NO. 3								0.59		64	0.38	6,348	6,230
TOTAL FOR PROJ NO. 5C.092125								0.59		64	0.38	6,348	6,230
GRAND TOTAL								1.56		192	1	16,785	16,473

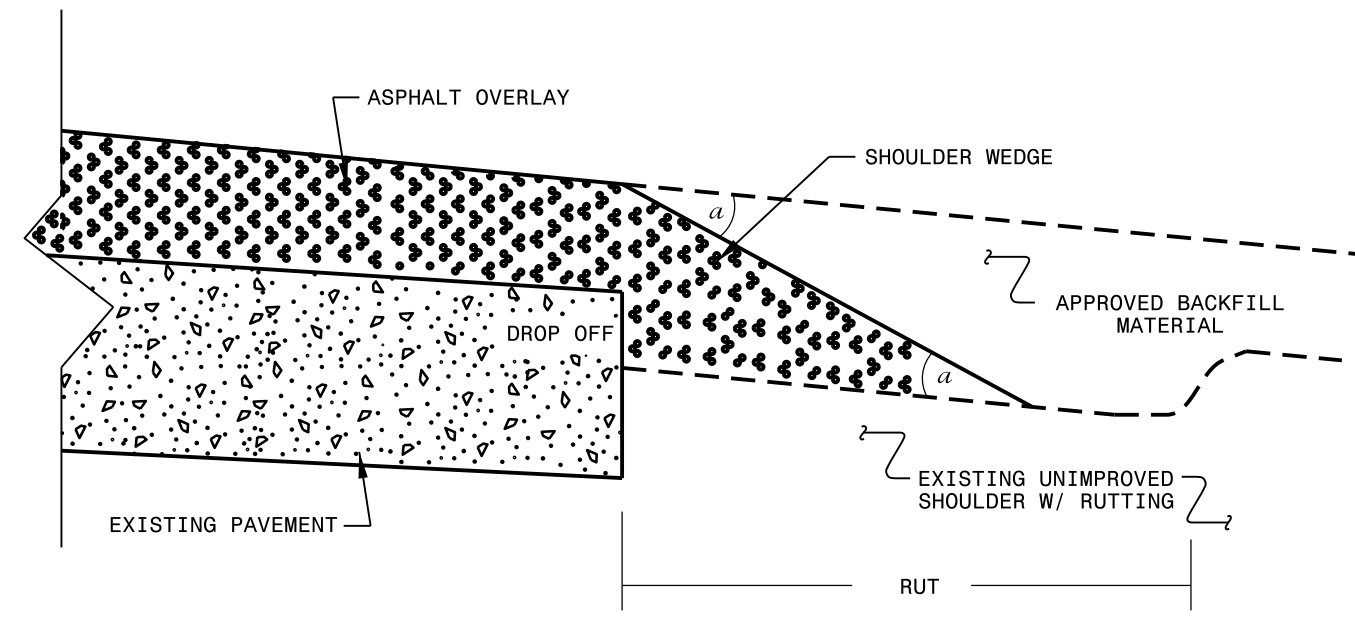
- NOTES:
- 1) DETAIL DOES NOT APPLY TO OGAFc AND ULTRA-THIN BONDED WEARING COURSE.
 - 2) BACKFILL SHOULDER WITH APPROVED MATERIAL.
 - 3) THE SHOULDER WEDGE DEVICE MAY BE DISENGAGED AT PAVED DRIVEWAYS AND SIDE STREETS.



SHOULDER WEDGE DETAIL
 (Resurfacing Projects w/ Widening or
 with Existing Paved Shoulder having no dropoffs)



SHOULDER WEDGE DETAIL
 (Resurfacing Projects w/ NO Widening)



SHOULDER WEDGE DETAIL
 (Resurfacing Adjacent to
 Rutted Shoulder)

- SHOULDER WEDGE ANGLE = 30°

CONTRACT STANDARDS AND DEVELOPMENT UNIT			
Office 919-707-6950		FAX 919-250-4119	
SHOULDER WEDGE DETAILS			
ORIGINAL BY: T.SPELL	DATE: 7-19-11		
MODIFIED BY:	DATE: 10/16/12		
CHECKED BY:	DATE:		
FILE SPEC.: susr/details/stand/shoulderwedgedetail.dgn			

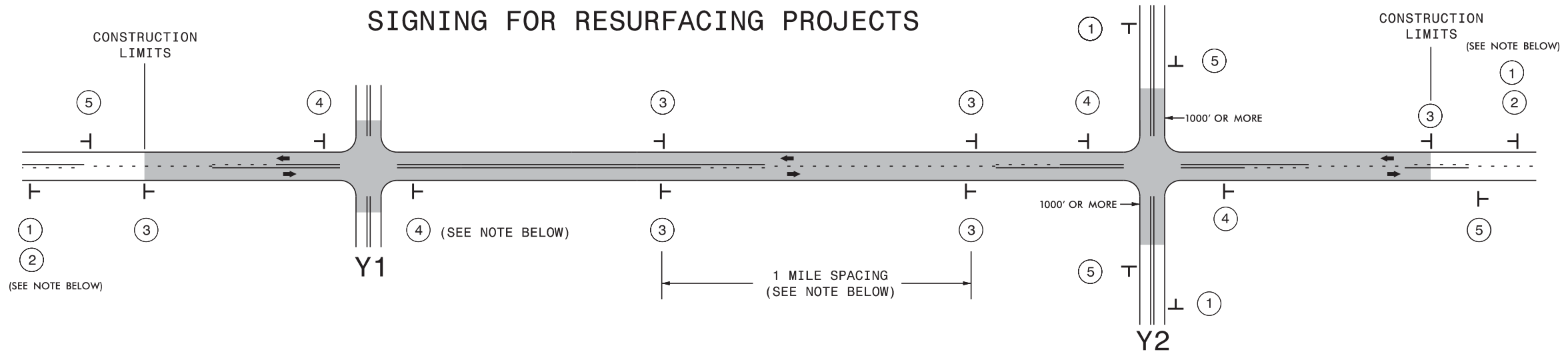
SYSTEM: 11/15/11
 USER: T.SPELL
 FILE: susr/details/stand/shoulderwedgedetail.dgn

**DIVISION OF HIGHWAYS
STATE OF NORTH CAROLINA**

SOIL STABILIZATION TIMEFRAMES

<i>SITE DESCRIPTION</i>	<i>STABILIZATION TIME</i>	<i>TIMEFRAME EXCEPTIONS</i>
PERIMETER DIKES, SWALES, DITCHES AND SLOPES	7 DAYS	NONE
HIGH QUALITY WATER (HOW) ZONES	7 DAYS	NONE
SLOPES STEEPER THAN 3:1	7 DAYS	IF SLOPES ARE 10' OR LESS IN LENGTH AND ARE NOT STEEPER THAN 2:1, 14 DAYS ARE ALLOWED.
SLOPES 3:1 OR FLATTER	14 DAYS	7 DAYS FOR SLOPES GREATER THAN 50' IN LENGTH.
ALL OTHER AREAS WITH SLOPES FLATTER THAN 4:1	14 DAYS	NONE, EXCEPT FOR PERIMETERS AND HOW ZONES.

SIGNING FOR RESURFACING PROJECTS



LEGEND	
┆	STATIONARY SIGN
←	DIRECTION OF TRAFFIC FLOW

MAINLINE (-L-) SIGNING

-Y- LINE SIGNING

SIGNING NOTES AND PLACEMENT PER DIRECTION	MAINLINE (-L-) SIGNING	-Y- LINE SIGNING
① ②	<p>PLACE 1000' PRIOR TO BEGINNING OF CONSTRUCTION LIMITS. ONLY USED ON -Y- LINES IF RESURFACING LIMITS EXTEND 1000' ALONG -Y- LINE.</p> <p>#2 SIGN ONLY USED WHEN RESURFACING LIMITS ARE 2 OR MORE MILES IN LENGTH. ROUND UP TO NEXT WHOLE NUMBER. (NO FRACTIONAL OR DECIMAL NUMBERS)</p>	<p>NO REQUIRED STATIONARY SIGNING FOR THE FOLLOWING -Y- LINE CONDITIONS:</p> <ol style="list-style-type: none"> LESS THAN 1000' OF RESURFACING ALONG -Y- LINE SUBDIVISION ROADS DEAD END ROADS
③	<p>PLACE INITIALLY AT THE CONSTRUCTION LIMITS AND SPACED 1 MILE APART THEREAFTER. IF NO -Y- LINES EXIST, PLACE 2ND SET 1/2 MILE FROM THE CONSTRUCTION LIMITS AND THEN SPACE 1 MILE THEREAFTER.</p>	<p>WHEN PAVING/CONSTRUCTION ACTIVITIES PROCEED ACROSS AN UNSIGNED -Y- LINE, ADVANCE WARNING PORTABLE SIGNS SHALL BE USED ALONG THE -Y- LINE AS SHOWN BELOW. REMOVE UPON COMPLETION OF WORK.</p>
④	<p>THESE ARE FOR -Y- LINES THAT ARE "THROUGH" ROADWAYS. DEAD END AND SUBDIVISION ROADS ARE NOT "THROUGH" ROADWAYS. INSTALL 500' +/- FROM EACH -Y- LINE APPROACH AS SHOWN ABOVE. FOR MULTIPLE -Y- LINES THAT ARE SEPARATED BY 0.25 MILES OR LESS, TREAT AS A SINGLE UNIT AND INSTALL WITHIN 500' OF EACH APPROACH. A MAXIMUM OF 2 SIGN SETS PER MILE. DO NOT INSTALL WHEN -Y- LINES ARE WITHIN 0.5 MILES FROM "END ROAD WORK" SIGN.</p>	<p>PLACED 500' IN ADVANCE OF FLAGGER. PLACED 250' IN ADVANCE OF FLAGGER.</p>
⑤	<p>PLACE 500' FOLLOWING THE END OF CONSTRUCTION LIMITS.</p>	

8/8/2013 S:\TMU\WZTC\Resurfacing\2013Documents\New_Procedures_05_09_2013\Resurfacing_AdvWarn_2Ln.dgn User:rmgarratt

**RESURFACING
ADVANCE WARNING SIGNS
FOR
RURAL AND SUBURBAN
2 LANE ROADWAYS**